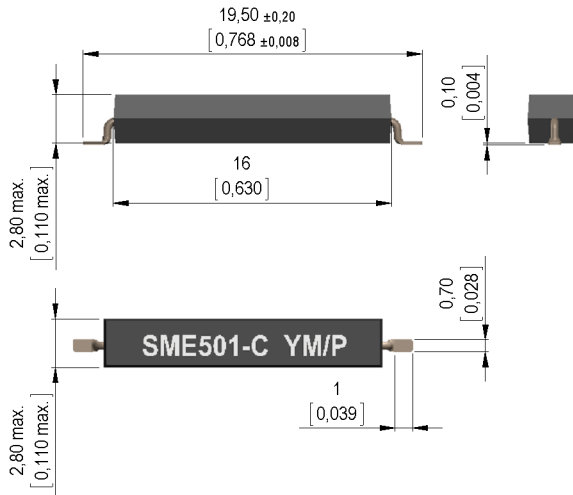


Dimensions mm[inch]
tolerances according to DIN ISO 2768-m
Toleranzen gem. DIN ISO 2768-m



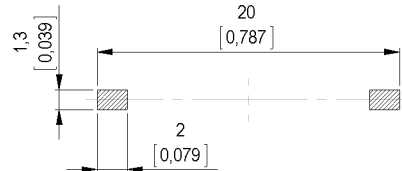
Isometric
Scale: 2:1
Maßstab 2:1



Marking
according to EN60062/Factory code
gem. EN60062/Fertigungsstätte

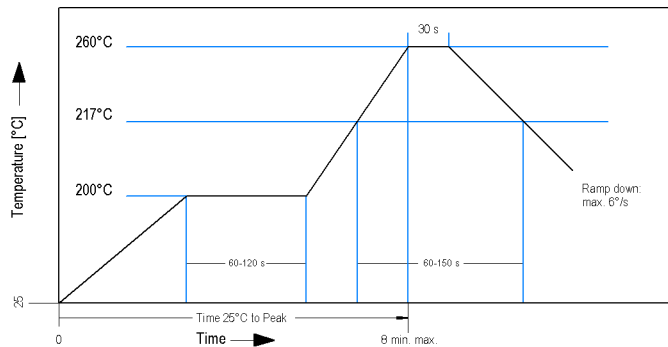


Recommended PCB Pad Layout

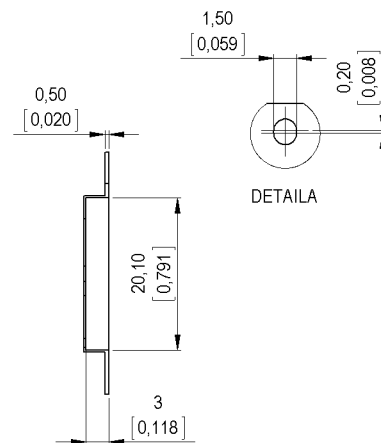
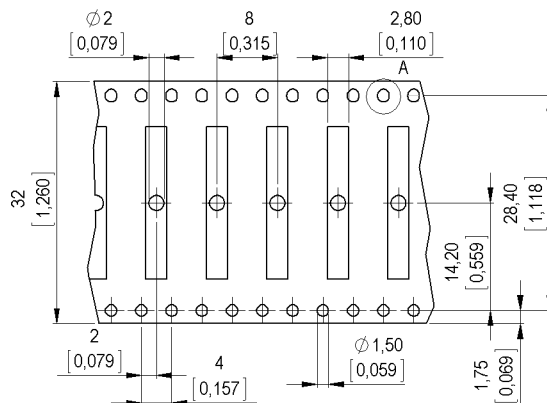


Solder Reflow Profile

reflow soldering conditions according to JEDEC norm J-STD-020D.1



Packaging
(4001350075)





Europe: +49 / 7731 8399 0

| Email: info@standexmeder.com

Item No.:

USA: +1 / 508 295 0771

| Email: salesusa@standexmeder.com

9155010023

Asia: +852 / 2955 1682

| Email: salesasia@standexmeder.com

Item:

MK15-501-C-2

Magnetic properties	Conditions	Min	Typ	Max	Unit
Pull-In	at 20°C	28		54	AT
Test equipment		KMS-11 + AP097			
Pull-In in milliTesla (modified conta	MS150 - phys. caused tolerance +/- 0,1mT	1,8		2,35	mT
Test equipment		MS-150			

Contact data 06/2	Conditions	Min	Typ	Max	Unit
Contact-form		A			
Contact-material		PGM-alloy			
Contact rating	Any DC combination of V & A not to exceed their individual max.'s			10	W
Switching voltage	DC or Peak AC			200	V
Switching current	DC or Peak AC			0,5	A
Carry current	DC or Peak AC			1	A
Contact resistance static	Measured with 40% overdrive Start value			100	mOhm
Insulation resistance	RH <45 %, 100 V test voltage	10			GOhm
Breakdown voltage	according to EN 60255-5	250			VDC
Operate time incl. bounce	measured with 40% overdrive			0,5	ms
Release time	measured with no coil excitation			0,1	ms
Capacity	@ 10 kHz across open switch		0,3		pF

Special Product Data	Conditions	Min	Typ	Max	Unit
Housing material		mineral-filled epoxy			

Environmental data	Conditions	Min	Typ	Max	Unit
Shock	1/2 sine, duration 11ms, in 3 axis			30	g
Vibration	from 10 - 2000 Hz			20	g
Ambient temperature		-40		125	°C
Storage temperature		-50		155	°C
Cleaning		fully sealed			

Modifications in the sense of technical progress are reserved

Designed at: 09.04.13 Designed by: WKOVACS

Approval at: 13.08.13 Approval by: DRUDOLF

Last Change at: 14.10.14 Last Change by: WKOVACS

Approval at: 20.10.14 Approval by: AWEBER

Version: 03