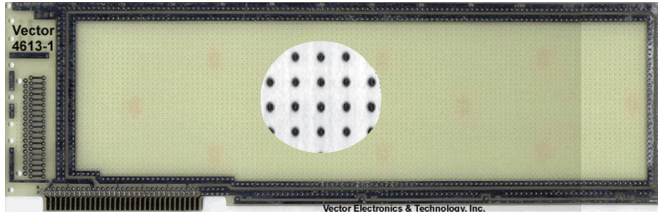


IBM PC, XT

Plugbord



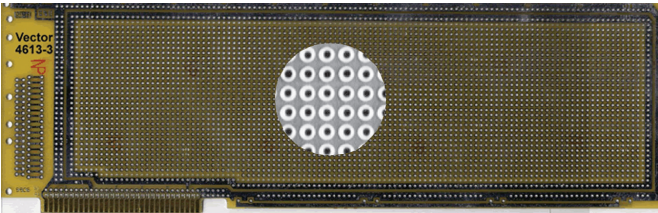
4613-1

Circuit Pattern:
Contacts:
Width/Thick:
Height:
16-Pin DIP Capacity:
Material:
V/G Terminals:
Socket Pins:
Extender:
Hole Diameter:

IBM PC, XT

Peripheral Buses
 31/62 @ .1" Ctrs
 Ni/Gold
 13.25" x .062"
 4.2"
 93
 FR4 Epoxy Glass
 T44, T46, T49, T68
 R32
 3690-26
 .042"

- 0.100" grid
- Voltage and ground buses around board perimeter, both sides
- Auxiliary bus line along lower edge of board, both sides
- I/O mounting area for 37-pin D-subminiature and ribbon cable connectors
- Mounting Bracket and hardware kit included (HD36B)



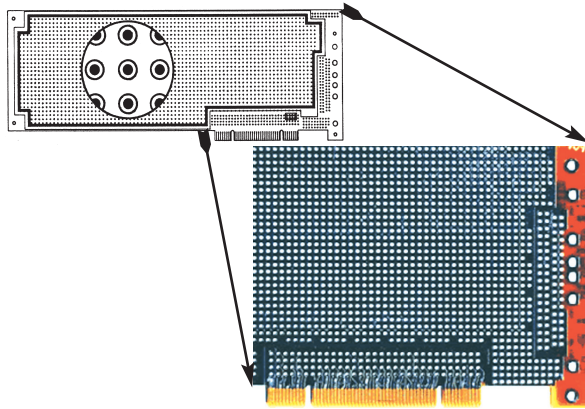
4613-3

Circuit Pattern:
Contacts:
Width/Thick:
Height:
16-Pin DIP Capacity:
Material:
V/G Terminals:
Socket Pins:
Extender:
Hole Diameter:

IBM PC, XT

Pad-Per-Hole
 31/62 @ .1" Ctrs
 Ni/Gold
 13.25" x .062"
 4.2"
 154
 FR4 Epoxy Glass
 T44, T46, T49, T68
 R32
 3690-26
 .042"

- 0.100" grid
- Plated-thru holes
- Voltage and ground buses around board perimeter
- I/O mounting area for 37-pin D-subminiature and ribbon cable connectors
- Mounting Bracket and hardware kit included (HD36B)



4624-3

4624-4

(Same as 4624-3 but no overall GND between pads)

Circuit Pattern:
Contacts:
Width/Thick:
Height:
16-Pin DIP Capacity:
Material:
V/G Terminals:
Extender:
Hole Diameter:

PCI Expansion Card

Pad-Per-Hole & Peripheral Buses
 120 @ 0.05" Ctrs
 Ni/Gold
 12.28" (std. size inc. extender portion of 1.06") x .062"
 4.5"
 79 plus PGAs
 FR4 Epoxy Glass
 T125, T126
 3690-34-5V or -3V
 .042"

- 0.100" grid
- For 32-bit environment, ISA format, 4 layer board
- Universal etched tab geometry fits both 3.3V and 5.0V tab notch patterns
- Mounting Bracket included
- Peripheral buses for voltage and ground distribution
- Isolated pads with plated thru holes
- I/O mounting area for D-subminiature and ribbon cable connectors

PCI

Mounting Bracket Kit

Mounting Bracket Kit with hardware for IBM PC, AT & EISA P.C. boards.
 Pattern has "knock out" cutouts for "D" subminiature connectors.

HD36B

