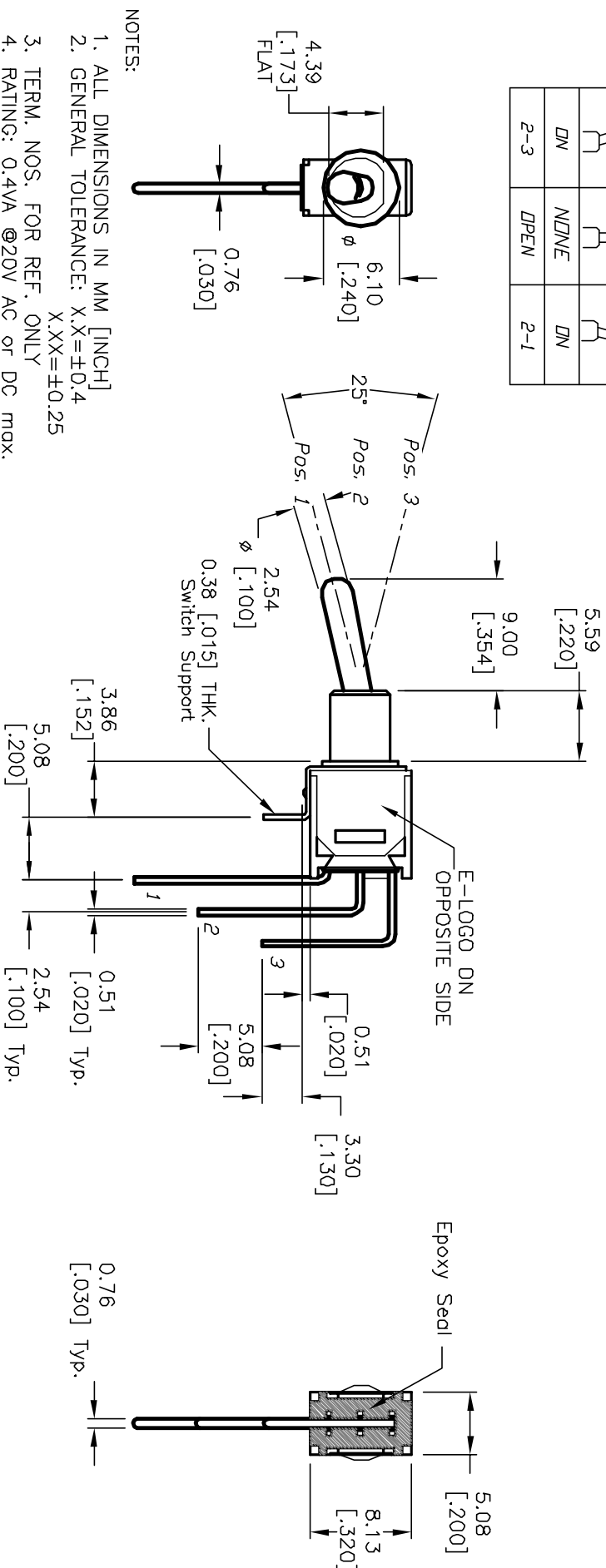
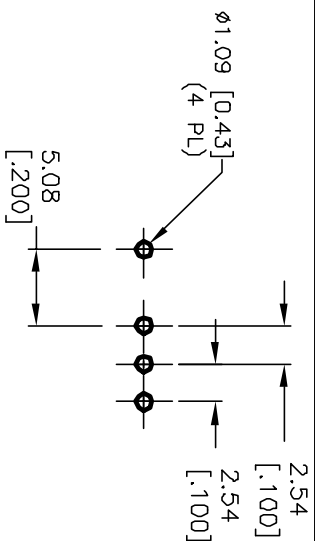


CIRCUIT: SPDT
CONTACT CONFIGURATION

SWITCH FUNCTION		
POS. 1	POS. 2	POS. 3
DN	NZ/NF	DN
2-3	DPEN	2-1



NOTES:

1. ALL DIMENSIONS IN MM [INCH]
2. GENERAL TOLERANCE: X.X=±0.4 X.XX=±0.25
3. TERM. NOS. FOR REF. ONLY
4. RATING: 0.4VA @20V AC or DC max.
5. FIXED TERM. MOVING CONTACT:
Copper Alloy w/Gold plate
over Nickel plate
6. ELECTRICAL LIFE: 30,000 make-and-break cycle at full load.
7. DIELECTRIC STRENGTH: 1,000 V RMS @sea level.
8. OPERATING TEMP.: -30°C to 85°C
9. ▲ DESIGNATE MAJOR FEATURE:

A		12508	RELEASED	10/23/02	CJB	TITLE		200 MSP-1 T1 B2 M7 R E (GOLD CONTACTS)
REV.	ECN NO.	DESCRIPTION		DATE	CHK'D	SCALE	DATE	DR
		THE INFORMATION CONTAINED IN THIS DOCUMENT IS PRELIMINARY AND SUBJECT TO CHANGE WITHOUT NOTICE. NOT TO BE COPIED OR TRANSMITTED.				2:1	10/23/02	CJB
								DWG
								T211098
								REV
								A

E-SWITCH®